

Secured by Design



Police Preferred Specification



LIFT CONTROL

PROJECTS REQUIRING
COMPARTMENTALISATION
USING CAME ENTROTEC
LIFT CONTROL

CAME 
ENTROTEC

CAME.COM/ENTROTEC



LIFT CONTROL

Entrotec would suggest a complete solution of entrance panel with fob reader is installed external to the lift cars at ground floor level. This should ideally be fitted above the lift call button.

The lift call button will therefore be inactive until access has been granted either by a fob being presented or a tenant allowing access following a call.

The Entrotec Lift Control Module (LCM) would provide a contact per floor (including ground), when access call is granted by the lift call panel or by use of a fob key a data signal will be sent to the Entrotec LCM, this will then supply a set of contacts to the lift car motor room, this output can be normally open or closed, and is

able to switch a maximum of 24vdc, or supply 12vdc the output is also time adjustable between 1 second and 4 minutes.

Entrotec recommend the lift manufacturer or installer allow for an override key switch to enable the lift car to be put back to standard use should this ever be necessary.

General synopsis of how Entrotec intend to allow the door entry system to control a lift car, and is intended as a guide only, and would be subject to site conditions and lift model used.

Entrotec would be pleased to assist with pre-planning meetings with lift manufacturers and installers.

TENANTS ACCESS TO THEIR DWELLING

A tenant will present their fob key at the outer (and inner if applicable) entrance panel doors, then move to the lift.

Once at the lift entrance panel they present the same fob key this will activate the ground floor lift call button which can then be pressed.

Once the lift car is at the ground floor the tenant enters the lift and then can select only the floor to which their fob key has access.

It is possible that a tenant fob has more than one level available for situations such as a communal lounge or basement.

VISITOR ACCESS

Visitors will use the outer and inner entrance panel doors to call the required dwelling. (the visitor can only choose to take the stairs where the stair core has a full entrance panel)

Once at the lift entrance panel the visitor will make a further call to the dwelling and if access is granted this will enable the ground floor lift call button which can then be pressed.

Once the lift car is at the ground floor the visitor enters the lift and can then only select the floor to which they have been granted access.

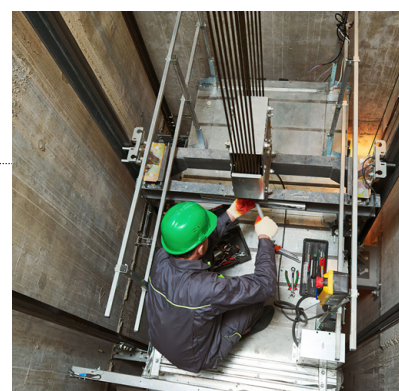
CONTRACTOR/STAFF ACCESS

It is possible to give further access rights to fob keys enabling a staff member to use the same fob to access either dedicated floors or all floors.

TENANT VISITING ANOTHER TENANT ON A DIFFERENT FLOOR

In this situation the tenant would need to enter the lift car, go to ground then make a call to the dwelling and then use the lift to go to the floor. For Secured by Design (SBD) compliance it is a requirement a tenant is seen no different to any other visitor.

At all times a visitor or tenant leaving a floor can use the landing lift call buttons as standard and once in the lift car press ground, they can also choose to take the stairs.



CAME ENTROTEC
5 Ashwood Court
Oakbank
Livingston
EH53 0TL

Tel: 01506 886230
Support: 01506 886235

© LIFTC0322 - 2022 - EN
YOU MAY NOT EVEN PARTIALLY REPRODUCE THIS DOCUMENT
THE DATA AND INFORMATION SHOWN IN THIS CATALOGUE ARE SUBJECT TO CHANGE WITHOUT OBLIGATION TO GIVE
PRIOR NOTICE BY CAME S.P.A. E&OE

CAME 
ENTROTEC

[CAME.COM/ENTROTEC](https://www.came.com/entrotec)