

Secured by Design



Police Preferred Specification



# EASITAG

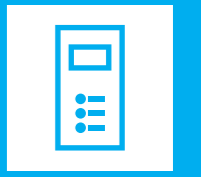
DOOR ENTRY &  
ACCESS CONTROL  
SOLUTIONS

**CAME**   
**ENTROTEC**

[CAME.COM/ENTROTEC](http://CAME.COM/ENTROTEC)







### OVERVIEW

Designed and built in the UK, EasiTag is one of the most renowned access control systems being installed across social, private and mixed tenure housing developments. EasiTag is an access control system that is built right in to a fully featured door entry system, making it a cost effective, easy to install with less cable requirements than standalone solutions.

EasiTag is easy to use, key management is assisted with fobs

being assigned to an apartment with a colour reference. It's straight forward, easy installation process can be accompanied by a free training course if necessary. Customer support is also on hand to aid any need for reassurance.

Entrotec have staff across the UK who will demonstrate, assist and explain the options and benefits of the Entrotec systems. Please get in touch.

### APPLICATION

An integrated proximity access control reader is typically mounted within all call panels. A standalone fob reader is typically mounted adjacent to communal entrances that do not require visitor access where a call panel is not fitted. For example, cycle and bin stores where only occupants are permitted access.

### OPERATION

Occupants and personnel typically present their RFID key fob credential to the reader. The reader provides visual and audible feedback indicating to the user that the fob has been read and if the access request has been permitted or denied. To further enhance accessibility, the front window has a raised key profile with high contrast colours (reversible insert: white/blue or yellow/black).

### PANEL MOUNT READER

- Integrated proximity access control reader mounted within call panels.
- Option of Black on Yellow or Blue on White reader
- Status LED (Red, Yellow, Green)
- Raised Key symbol
- Simple resident access management



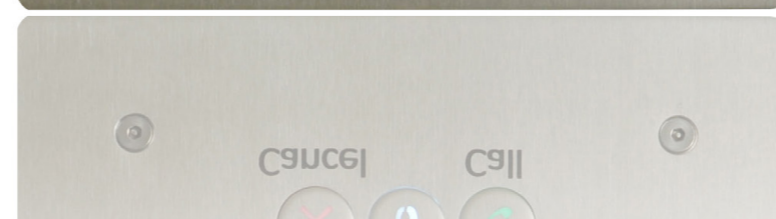
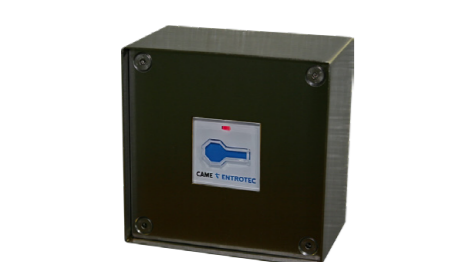
### ETA/IG READER

- Standalone reader for entrances without a call panel.
- Option of Black on Yellow or Blue on White reader
- Status LED (Red, Yellow, Green)



### ETA/\*\* READER

- Standalone reader for entrances without a call panel.
- Option of Black on Yellow or Blue on White reader
- Status LED (Red, Yellow, Green)
- Raised Key symbol
- Surface Mount (shown), Bezelled and Overlap versions available
- Integrated or Remote Lock Release Connections



### OVERVIEW

The new eTag-S offers new features as well as enhanced looks. This new key-fob complements recent product CHIC and APEX/OLED. It is just 2.2mm compared to the 7mm profile of eTag and is very lightweight.

The eTag-S is made from a highly durable material; Nylon Polymer

(PA Type 6). This is an industrial grade plastic that is difficult to bend, break or scratch. It is 'over-moulded', meaning the RFID chip is completely sealed and 100% waterproof. The eTag-S design and material makes it suitable for permanent laser marking, which appears very sharp.



### FEATURES

- Slim and Light Key fob
- Strong and Durable Construction
- Choice of 10 Colours
- Laser Etched Serial Number
- 100% Water Proof
- Impact Resistant

### COLOURS & USAGE

Colour	Usage
eTag-S Black	First issued tenant fob
eTag-S Orange	Second issued tenant fob
eTag-S Green	Third issued tenant fob
eTag-S Blue	Fourth issued tenant fob/spare
eTag-S Yellow	Fifth issued tenant fob/spare
eTag-S Violet	Sixth issued tenant fob/spare
eTag-S Grey	For contractors
eTag-S Indigo	For Staff/Common access
eTag-S White	For postal access
eTag-S Red	For Commercial/Other Usages

### TECHNICAL DATA

- Material: Industrial Grade Nylon Polymer (PA Type 6)
- IP Rating: IP 68
- Dimensions: 45 x 30 x 2.2mm
- Temp Range: -25°C to +85°C
- Weight: 3g



# EASITAG SYSTEM MANAGEMENT

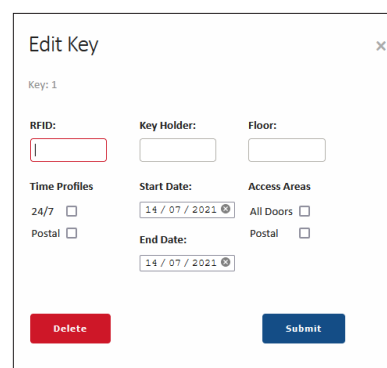
## EASITAG PROGRAMMING CARD

- Secure and easy on-site programming from a call panel
- Present the EPC to the reader to enter programming mode
- Add and configure keys for occupants and visitors
- Pre-printed PVC card with instructions on reverse of card
- Unique to each system / block, optional pre-programming service available



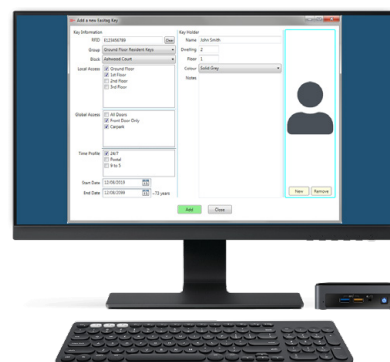
## APEX WEBSERVER

- Webpage for secure and easy on-site management of each block
- Add and configure access credentials for occupants and visitors
- Manage authorisation levels for occupants, personnel and visitors
- Configure access areas, door groups and access levels with associated time profiles



## ENTRONETS

- Powerful system management tool for up to 255 blocks on each development
- Add and configure access credentials for occupants and visitors across multiple blocks
- Manage authorisation levels for occupants, personnel and visitors
- Configure access areas, door groups and access levels with associated time profiles
- Monitor access control activity, view logs and create reports



## EASITAG KEY FEATURES

- Secured by Design compliant and tested
- Up to 1024 doors per block\*
- Up to 400,000 keys per block\*
- Up to 44 programmable access areas per block\*
- Assisted key management
- On-site or remote key management options\*
- Event logs and key usage reports\*
- Optional pre-programmed contractor keys
- Colour coded keys
- Optional lift interface for controlled level access
- Auto GMT/BST time clock for time restricted access
- Easy installation with simple cabling
- Lock release times individually, adjustable between 1 & 60 seconds
- DC system allowing for battery back-up, DC lock releases and mag-locks (fused)
- Controllers supplied in IP66 lockable steel enclosures
- Stainless Steel 2.5mm 316L Call Panels and Reader plates

\* Depending on system type, hardware and installation restrictions.

**CAME ENTROTEC**  
5 Ashwood Court  
Oakbank  
Livingston  
EH53 0TL

**Tel:** 01506 886230  
**Support:** 01506 886235

**CAME**   
**ENTROTEC**